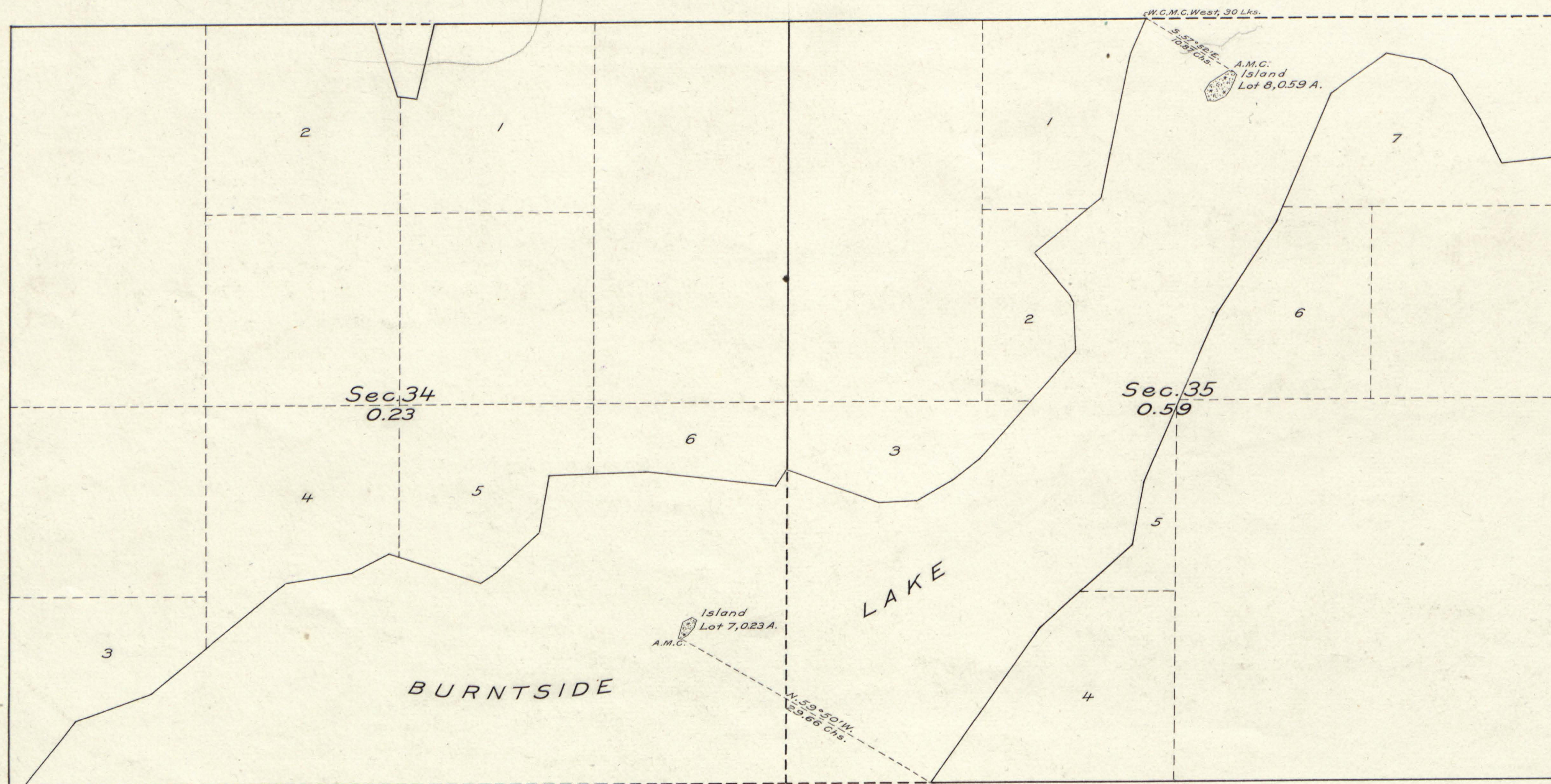


PLAT OF TWO ISLANDS  
 in  
 Burntside Lake,  
 Secs. 34 and 35, T. 64 N., R. 13 W., 4th Prin. Mer.,  
 MINNESOTA.



Original  
**DUPLICATE** PLAT  
 The following annotations  
 are not a part of this Plat

Received with *A.D. Kidder's*  
 Surveyor General's  
 letter of *940122*  
*May 19, 1922*  
 Posted in Div. 10 July 14, 1922.  
*Vol. 59 p. 229* *AL*  
 Township Plat filed with R. and R.

Miscellaneous

LEGEND.

Scale: 1 inch = 10 chains.

Surveyed by Earl G. Harrington, U. S. Cadastral Engineer,  
 on August 4, 1921, under special instructions dated June 17,  
 1921, issued by Arthur D. Kidder, Associate Supervisor of  
 Surveys, which were approved by the Commissioner of the General  
 Land Office on June 23, 1921.

Area of lands surveyed = 0.82 acres.  
 Areas of previously surveyed lands not shown.

The undersigned hereby certifies that the survey delineated  
 upon this plat has been executed under his general direction and  
 in accordance with the approved special instructions issued pursu-  
 ant to authority contained in office letter 940122 "E" JHB, dated  
 October 18, 1920, addressed to the Secretary of the Interior and  
 approved October 22, 1920, and that the field notes and the plat  
 of the survey have been carefully verified.

Washington, D. C.,  
 May 19, 1922.

*A.D. Kidder*  
 Associate Supervisor of Surveys.

*JBC*

Department of the Interior,  
 General Land Office.

*ESD*

Washington, D. C., May 25, 1922.

The above plat of two Islands in Burntside Lake in Sections  
 34 and 35, Township 64 North, Range 13 West, of the 4th Principal  
 Meridian, Minnesota, is strictly conformable to the field notes of  
 the survey thereof, on file in this office, which have been examined  
 and approved.

*William Spry*  
 Commissioner and ex officio  
 U. S. Surveyor General for Minnesota.