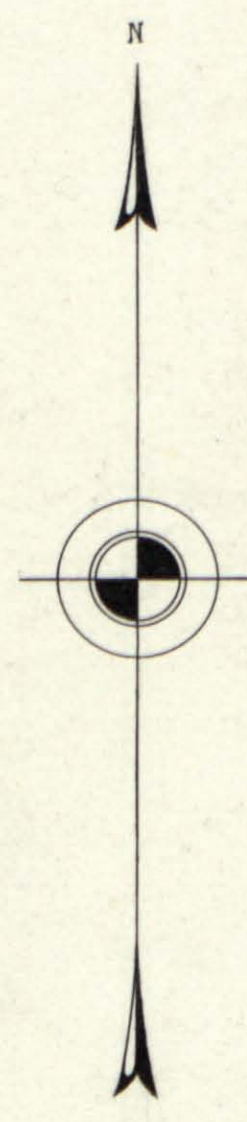
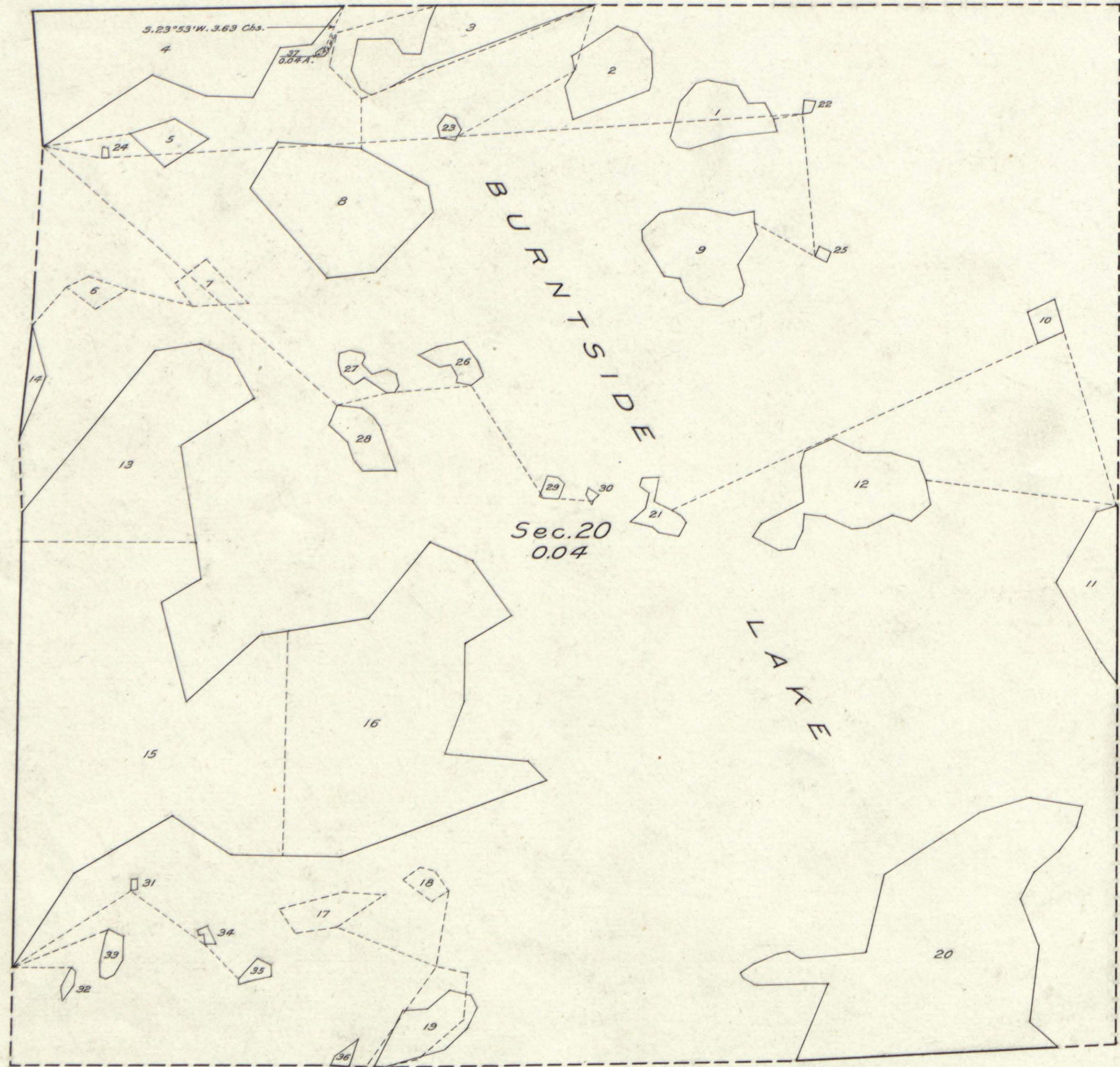


Plat of Two Islands in Burntside Lake, Secs. 14 and 20, T. 63 N., R. 13 W., 4th Prin. Mer., Minnesota.



Original
DUPLICATE PLAT
 The following annotations
 are not a part of this Plat

D.B. Clement's
 Received with ~~1120121~~
 letter of 1120121
 Mar. 8, 1926
 Posted in Div. of June 7, 1926
 Vol. 59 p. 217
 Township Plat filed with R. and R.

Miscellaneous

LEGEND.

Scale: 1 inch = 10 chains.

Surveyed by Albert Smith, Jr., U. S. Cadastral Engineer, on September 1, 1924, under special instructions for Group No. 18, Minnesota, dated June 3, 1924, issued by Frank M. Johnson, Supervisor of Surveys, which were approved by the Commissioner of the General Land Office on June 13, 1924.

Area of lands surveyed = 0.08 Acres, not shown upon the original plats approved November 3, 1861, and March 29, 1924.

Areas of previously surveyed lands not shown.

Office of U. S. Supervisor of Surveys,
 Denver, Colorado, February 12, 1926.

The above plat of two Islands in Burntside Lake, Sections 14 and 20, Township 63 North, Range 13 West, of the Fourth Principal Meridian, in the State of Minnesota, is strictly conformable to the field notes of the survey thereof, which have been examined and approved.

Frank M. Johnson
 U. S. Supervisor of Surveys.

DEPARTMENT OF THE INTERIOR.
 GENERAL LAND OFFICE.
 Washington, D. C., March 17, 1926.

The survey represented by this plat, having been correctly executed in accordance with the requirements of law and the regulations of this office, is hereby accepted.

D. H. Fawcett
 Acting Assistant Commissioner.