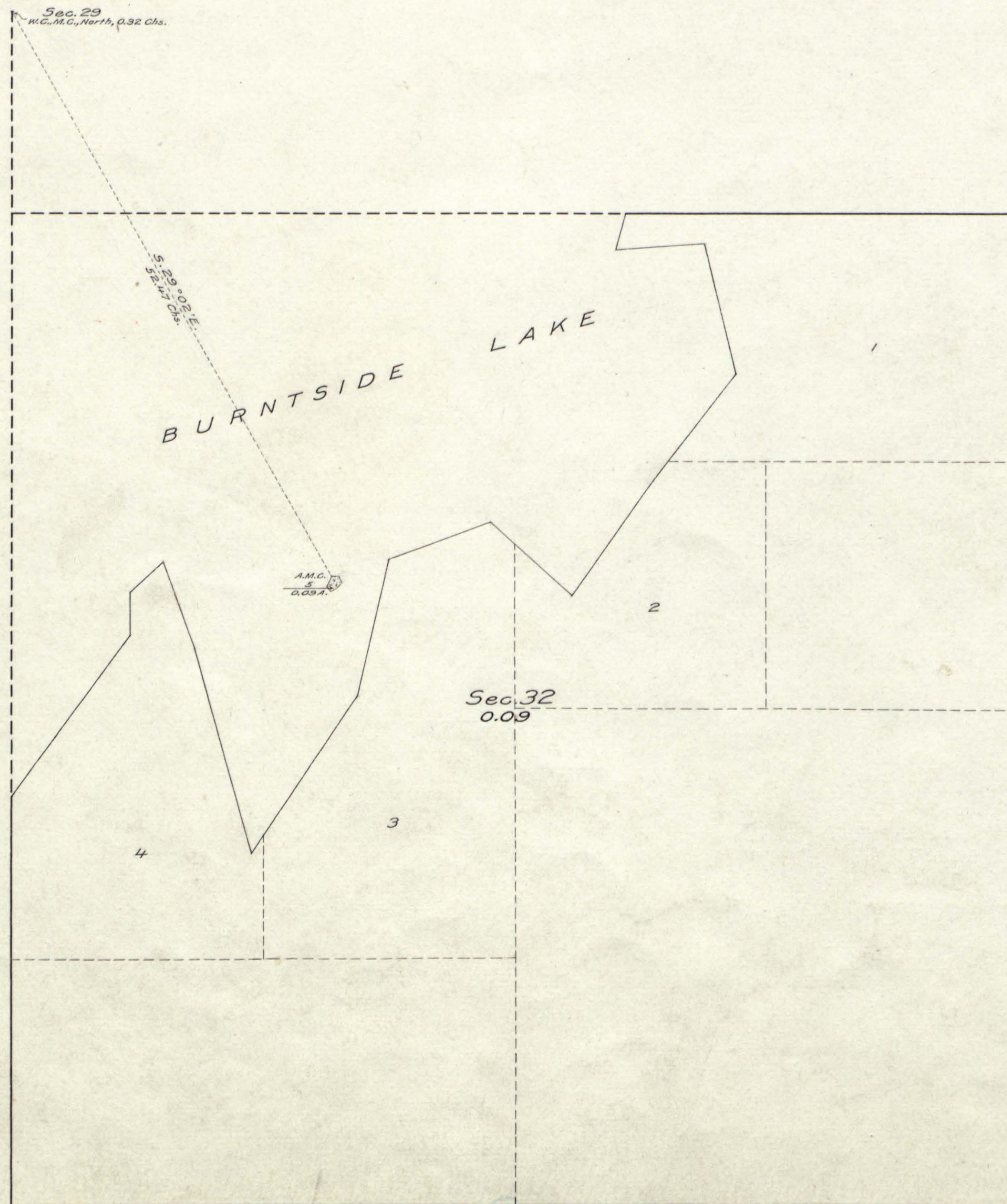
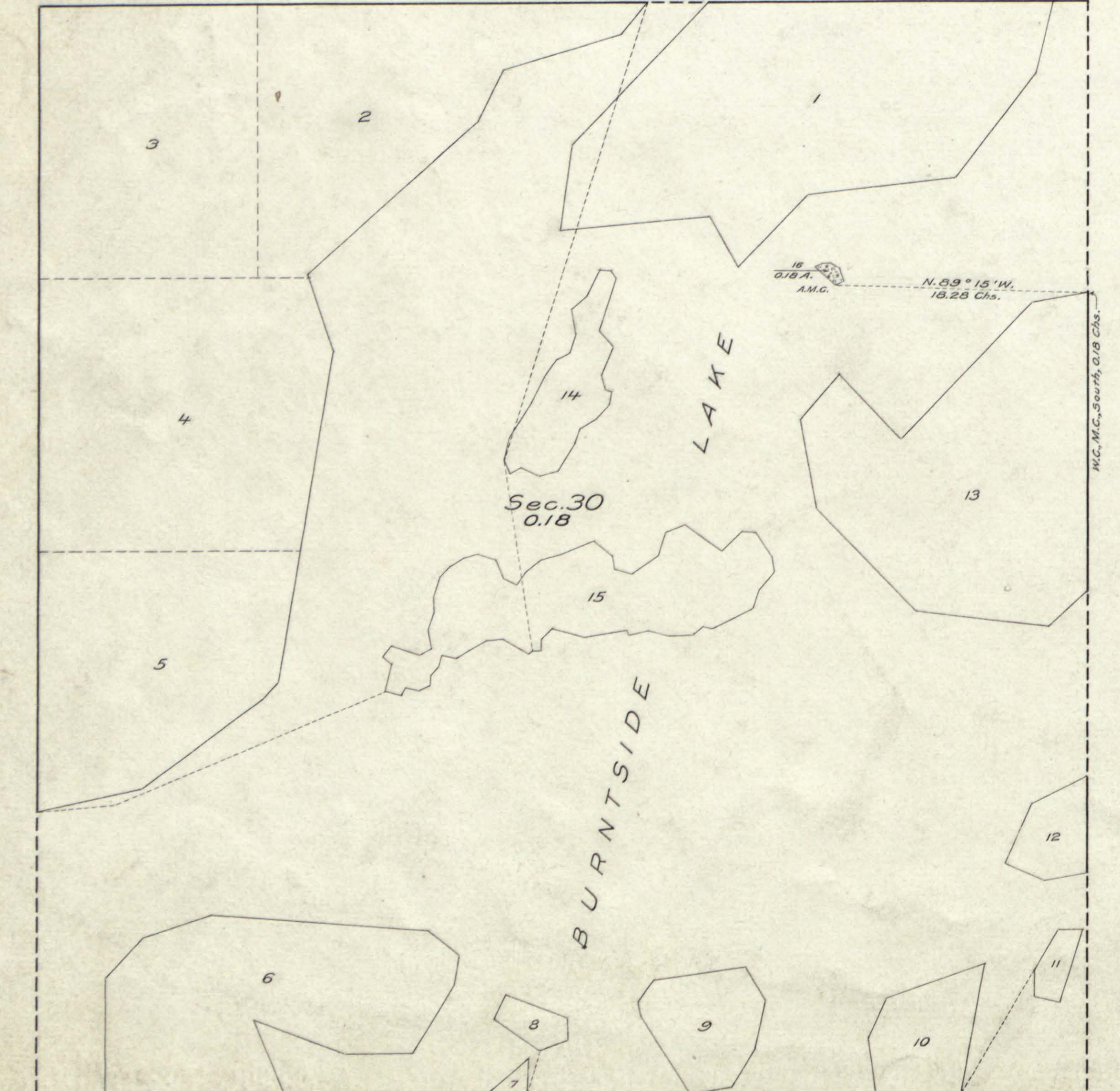


PLAT OF SIX ISLANDS
in
Burntside Lake,
Secs. 17, 30 and 32, T. 63 N., R. 13 W., 4th Prin. Mer.,
MINNESOTA.



MEMORANDUM.

The position of the original meander line of Burntside Lake in Section 17 is shown by a broken line, and the actual shore line of Burntside Lake in Section 17 is shown by a solid line.

The boundaries of the original lots in Section 17 extend only to the actual shore line of Burntside Lake. Original lot 7 of Section 17 is found to be out of position. The actual position of this lot is shown by a solid line, and the record position by a broken line. The position of original lot 3 of Section 17 is found to be approximately correct. Its actual position is shown by a solid line, and its record position by a broken line.

The undersigned hereby certifies that the survey delineated upon this plat has been executed under his general direction and in accordance with the approved special instructions, issued pursuant to authority contained in office letter 1007620-1008179-1008180 "E" JHB, dated November 12, 1921, and in office letter 1026724 "E" JHB, dated February 21, 1922, and in office letter 1035888 "E" JHB, dated April 24, 1922, and that the field notes and the plat of the survey have been carefully verified.

Denver, Colorado.
December 6, 1923.

William Sperry
Supervisor of Surveys.

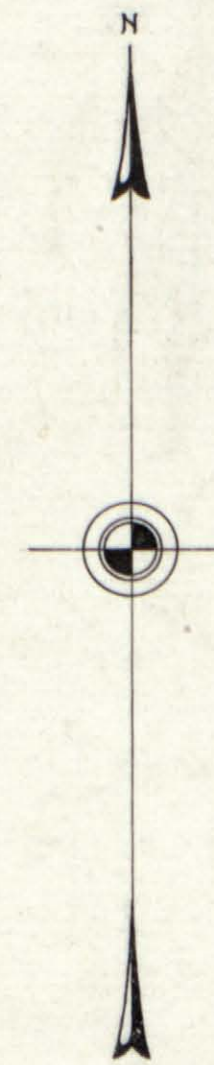
LEGEND.

Scale: 1 inch = 10 chains.

Surveyed by Earl G. Harrington, U. S. Cadastral Engineer, from August 10 to September 17, 1922, inclusive, under special instructions for Group No. 10, Minnesota, dated May 2, 1922, issued by Arthur D. Kidder, Associate Supervisor of Surveys, which were approved by the Commissioner of the General Land Office on May 12, 1922.

Area of lands surveyed = 1.80 Acres, not shown upon the plats approved November 3, 1881, and May 12, 1902.

Areas of previously surveyed lands not shown.



ORIGINAL
DUPLICATE PLAT
The following annotations
are not a part of this Plat

D. B. Clement's
Received with Summary General's
1045156
letter of March 17, 1924
Posted in Div. 8 May 16, 1924
Vol. 59 p. 217. J.B.
Township Plat filed with R. and R.

Miscellaneous

SBC

Department of the Interior,
General Land Office.

Washington, D. C., March 29, 1924.

The above plat of six Islands in Burntside Lake in Sections 17, 30 and 32, Township 63 North, Range 13 West, of the Fourth Principal Meridian, in the State of Minnesota, is strictly conformable to the field notes of the survey thereof, on file in this office, which have been examined and approved.

William Sperry
Commissioner and ex officio
U. S. Surveyor General for Minnesota.