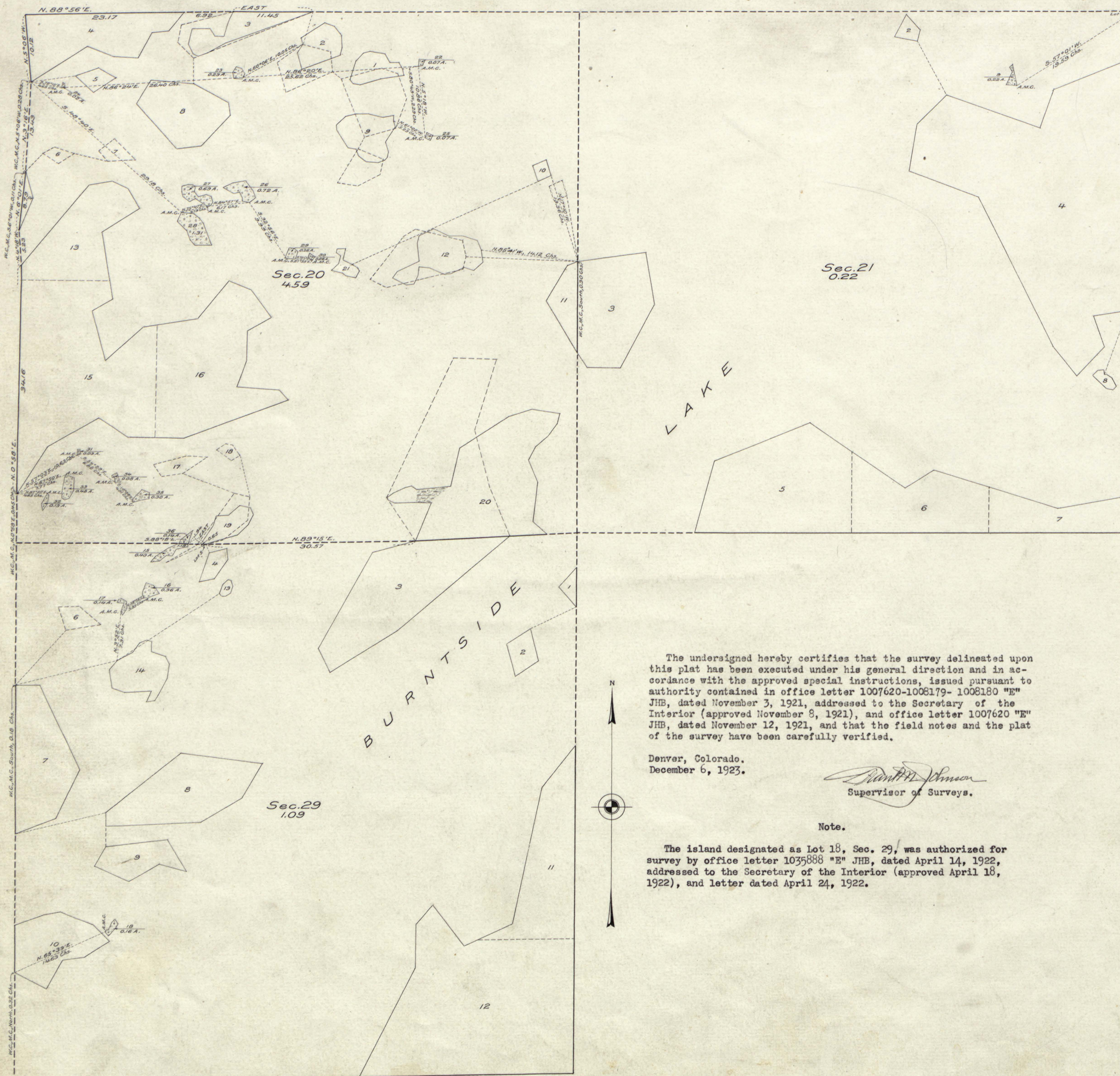


PLAT OF NINETEEN ISLANDS  
in  
Burntside Lake,  
Secs. 20, 21 and 29, T. 63 N., R. 13 W., 4th Prin. Mer.,  
MINNESOTA.



MEMORANDUM.

The original lots 1, 2, 9, 10 and 12 in Section 20 are found to be out of position. Their actual positions are shown by solid lines and their record positions by broken lines.

The original lots 3 and 19 in Section 20 are found to be approximately correct, the actual meanders being shown by solid lines and the original meanders by broken lines.

A topographical survey of the shore line of lot 20 in Section 20 was made. The actual shore line of this lot is shown by a solid line, and the record shore line by a broken line.

Original lot 5 of Section 29 is found to be incorrect, its actual boundaries being shown by solid lines and its original boundaries by broken lines.

The original lots 6, 7, 17 and 18 of Section 20, and the original 6 of Section 29, are found not to exist. Their record positions are shown by broken lines.

LEGEND.

Scale: 1 inch = 10 chains.

Surveyed by Earl G. Harrington, U. S. Cadastral Engineer, from August 10 to September 17, 1922, inclusive, under special instructions for Group No. 10, Minnesota, dated May 2, 1922, issued by Arthur D. Kidder, Associate Supervisor of Surveys, which were approved by the Commissioner of the General Land Office on May 12, 1922.

Area of lands surveyed = 5.90 Acres, not shown upon the plats approved November 3, 1881, May 13, 1922, and May 25, 1922.

Areas of previously surveyed lands not shown.

The undersigned hereby certifies that the survey delineated upon this plat has been executed under his general direction and in accordance with the approved special instructions, issued pursuant to authority contained in office letter 1007620-1008179-1008180 "E" JHB, dated November 3, 1921, addressed to the Secretary of the Interior (approved November 8, 1921), and office letter 1007620 "E" JHB, dated November 12, 1921, and that the field notes and the plat of the survey have been carefully verified.

Denver, Colorado.  
December 6, 1923.

*William J. Johnson*  
Supervisor of Surveys.

Note.

The island designated as Lot 18, Sec. 29, was authorized for survey by office letter 1035888 "E" JHB, dated April 14, 1922, addressed to the Secretary of the Interior (approved April 18, 1922), and letter dated April 24, 1922.

*WJH*  
Department of the Interior,  
General Land Office.  
Washington, D. C., March 29, 1924.

The above plat of nineteen Islands in Burntside Lake in Sections 20, 21 and 29, Township 63 North, Range 13 West, of the Fourth Principal Meridian, in the State of Minnesota, is strictly conformable to the field notes of the survey thereof, on file in this office, which have been examined and approved.

*William J. Gray*  
Commissioner and ex officio  
U. S. Surveyor General for Minnesota.

ORIGINAL  
DUPLICATE PLAT  
The following annotations  
are not a part of this Plat

D. B. Clement's  
Received with *Survey of Minnesota*  
letter of March 17, 1924  
102535  
Posted in Div. of May 10, 1924  
Vol. 59 p. 217 - *JHG*  
Township Plat filed with R. and R.

Miscellaneous