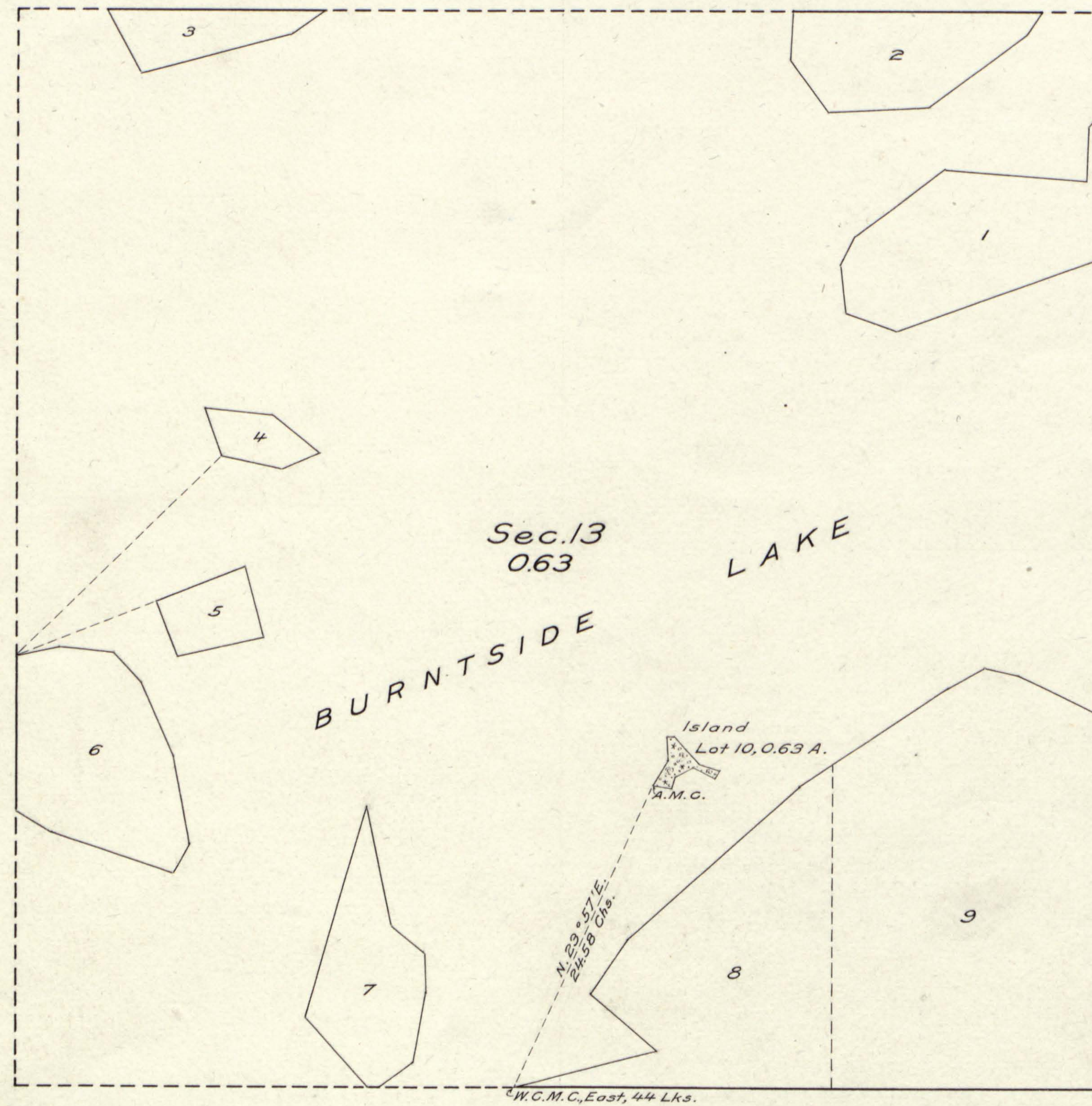
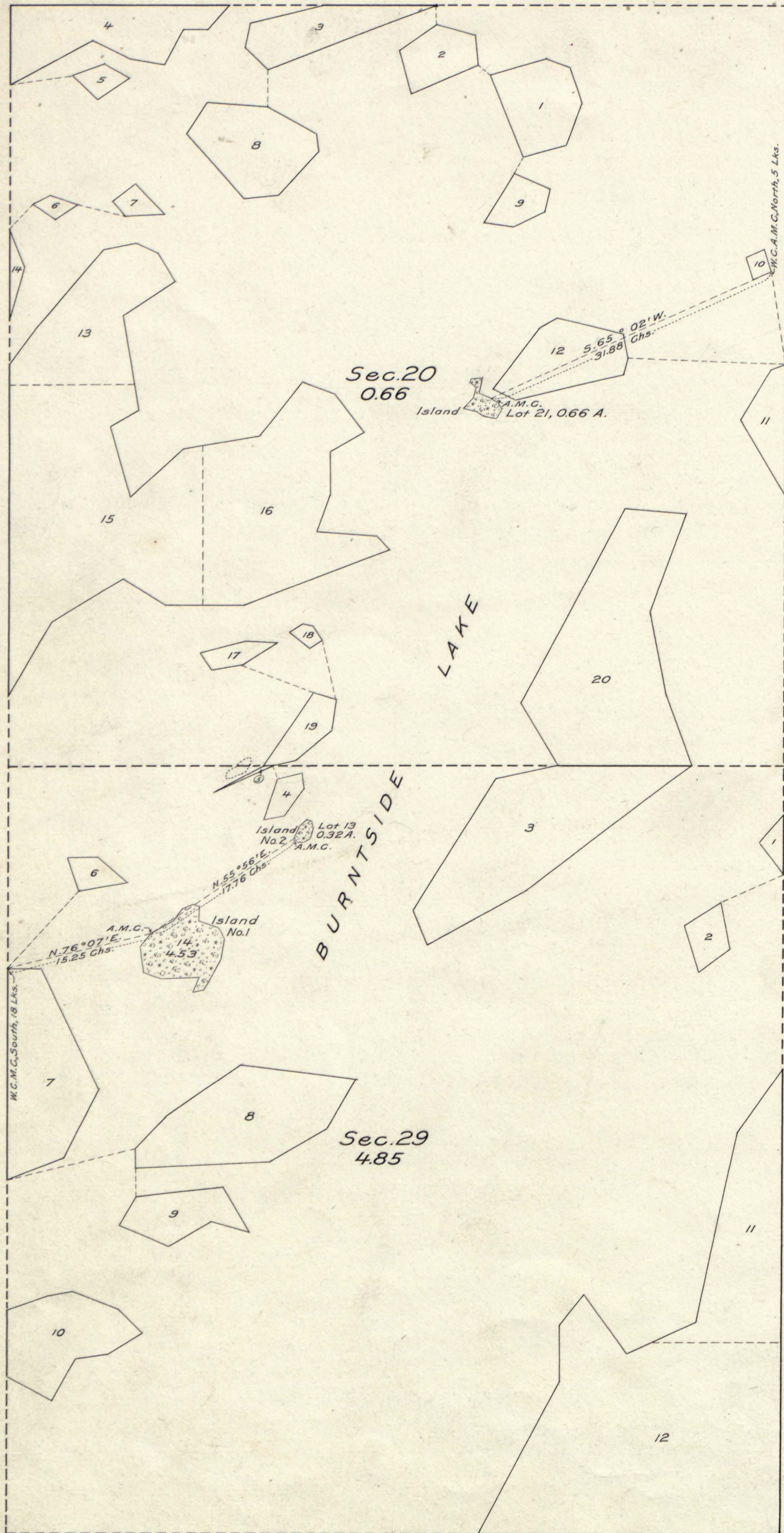


PLAT OF FOUR ISLANDS
in
Burntside Lake,
Secs. 13, 20 and 29, T. 63 N., R. 13 W., 4th Prin. Mer.,
MINNESOTA.



LEGEND.

Scale: 1 inch = 10 chains.

Surveyed by Earl G. Harrington, U. S. Cadastral Engineer, from July 31 to August 6, 1921, inclusive, under special instructions dated June 17, 1921, issued by Arthur D. Kidder, Associate Supervisor of Surveys, which were approved by the Commissioner of the General Land Office on June 23, 1921.

Area of lands surveyed = 6.14 acres.
Areas of previously surveyed lands not shown.

Original
DUPLICATE PLAT
The following annotations
are not a part of this Plat

Received with
Supervisor General's
letter of *940122*
May 19, 1922

Posted in Div. O' July 14, 1922
Vol. 59 p. 217 *File*

Township Plat filed with R. and R.

Miscellaneous

The undersigned hereby certifies that the survey delineated upon this plat has been executed under his general direction and in accordance with the approved special instructions issued pursuant to authority contained in office letter 940122 "E" JHB, dated October 18, 1920, addressed to the Secretary of the Interior, and approved October 22, 1920, and that the field notes and the plat of the survey have been carefully verified.

Washington, D. C.,
May 19, 1922.

A. D. Kidder
Associate Supervisor of Surveys.

SPC
Department of the Interior,
General Land Office.
Washington, D. C., May 25, 1922.

The above plat of four islands in Burntside Lake in Sections 13, 20 and 29, Township 63 North, Range 13 West, 4th Principal Meridian, Minnesota, is strictly conformable to the field notes of the survey thereof, on file in this office, which have been examined and approved.

William Gray
Commissioner and ex officio
U. S. Surveyor General for Minnesota.