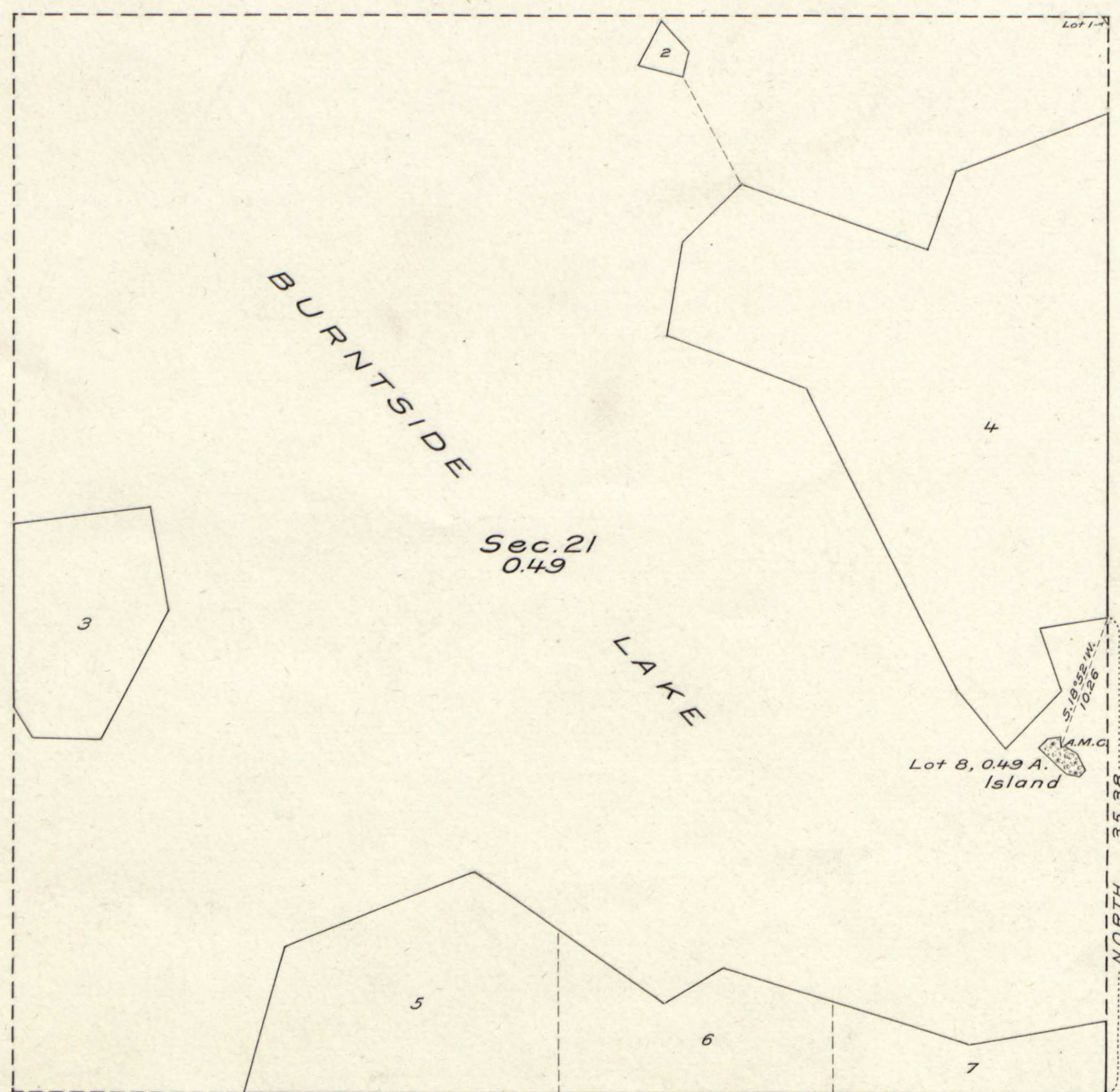


PLAT OF AN ISLAND
 in
 Burntside Lake,
 Sec. 21, T. 63 N., R. 13 W., 4th Prin. Mer.,
 MINNESOTA.



LEGEND.

Scale: 1 inch = 10 chains.

Surveyed by Albert Smith, Jr., U. S. Cadastral Engineer, on September 30, 1920, under special instructions dated July 23, 1920, issued by Arthur D. Kidder, Associate Supervisor of Surveys, which were approved by the Commissioner of the General Land Office on July 31, 1920.

Area of lands surveyed = 0.49 acres.
 Area of previously surveyed lands not shown.

**ORIGINAL
 DUPLICATE PLAT**
 The following annotations
 are not a part of this Plat

Associate Supervisor's
 Received with Surveyor General's
 letter of May 10, 1922.
 Posted in Div. 10 July 14, 1922
 Vol. 59 p. 217. H.C.
 Township Plat filed with R. and R.

Miscellaneous

Department of the Interior,
 General Land Office.

E.H.K.

Washington, D. C., May 13, 1922.

The above plat of an Island in Burntside Lake, in Section 21, Township 63 North, Range 13 West, of the Fourth Principal Meridian, in the State of Minnesota, is strictly conformable to the field notes of the survey thereof, on file in this office, which have been examined and approved.

William Spry
 Commissioner and ex officio
 U. S. Surveyor General for Minnesota.

The undersigned hereby certifies that the survey delineated upon this plat has been executed under his general direction and in accordance with the approved special instructions issued pursuant to authority contained in office letter 861242 "E" JHB, dated March 22, 1920, addressed to the Secretary of the Interior (Approved March 26, 1920), and office letter dated April 5, 1920, addressed to the undersigned, and that the field notes and the plat of the survey have been carefully verified.

Washington, D. C.
 May 10, 1922.

A.D. Kidder

Associate Supervisor of Surveys.